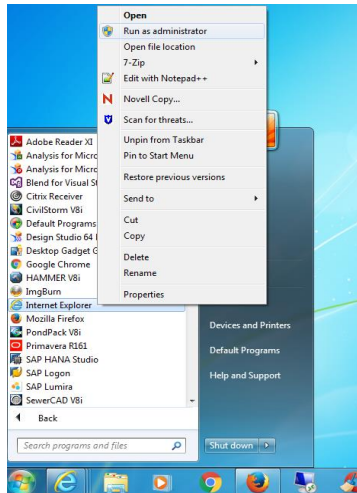


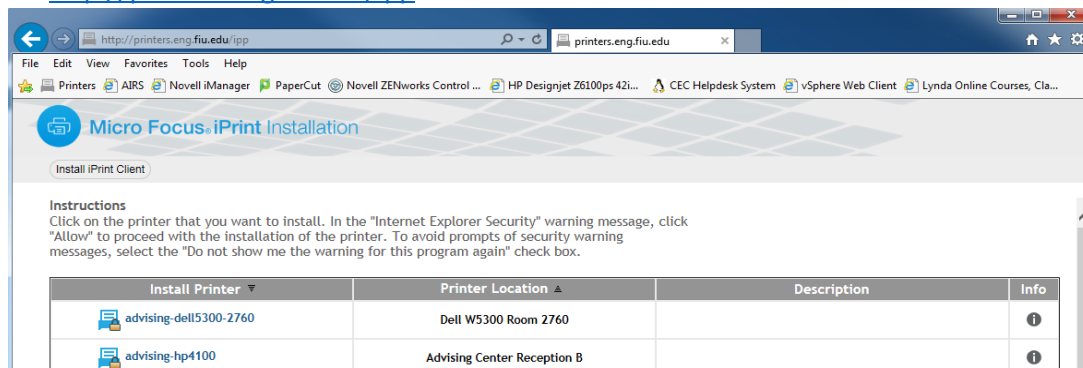
EIC USER MANUAL FOR INSTALLING NETWORK PRINTERS

Dear EIC user, please notice that you will only be able to use those printers to which your Novell account has been granted access. 😊

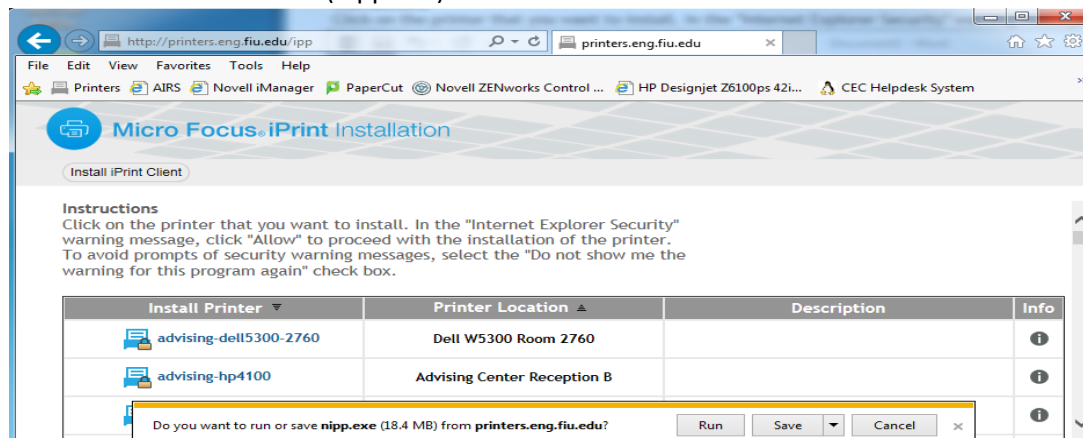
1- Run Internet Explorer as Administrator



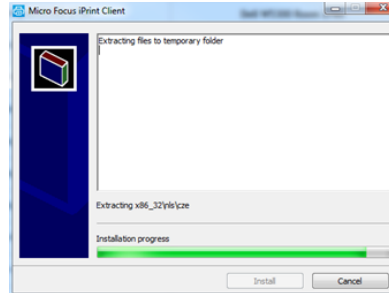
2- Go to <http://printers.eng.fiu.edu/ipp> and click on the button “Install iPrint Client”



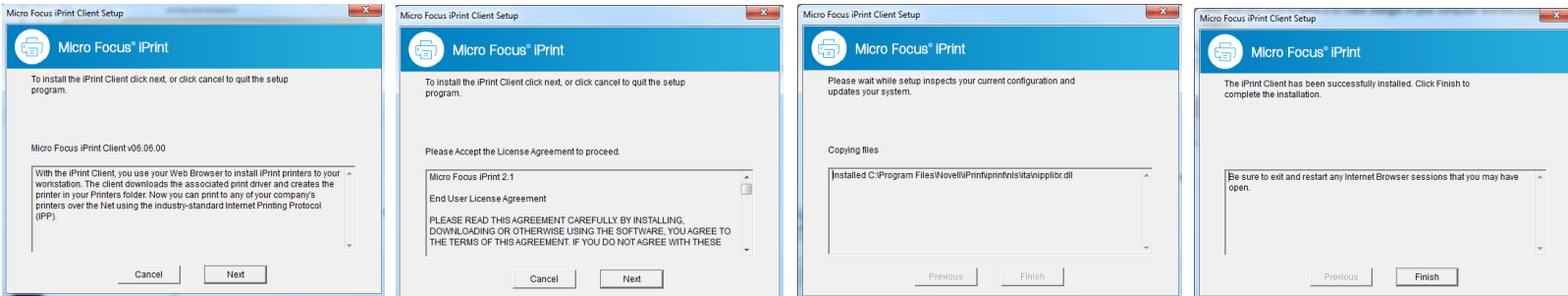
3- Run the iPrint Client Installer (nipp.exe)



4- The installer will start extracting files



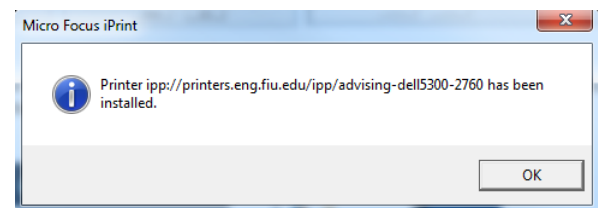
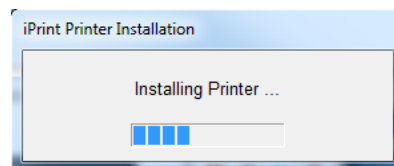
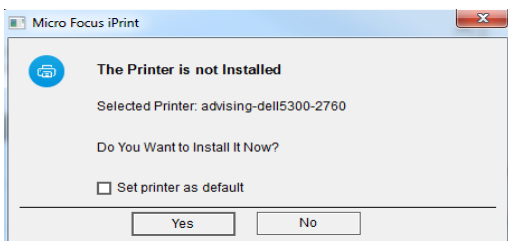
a. After that you must allow it to make changes in your computer and the installation process begins



b. Once the installation process finishes be sure to close any Internet Browser session that you may have open. Also you will see a new icon in the computer's Notification Area (at the right bottom of your screen)



5- Go to <http://printers.eng.fiu.edu/ipp> and select the printer you want to install (You can even choose to set it as default)



- 6- You can verify the printer is already installed going to “Devices and Printers”
(Your default printer will have a green checkmark in the icon)

