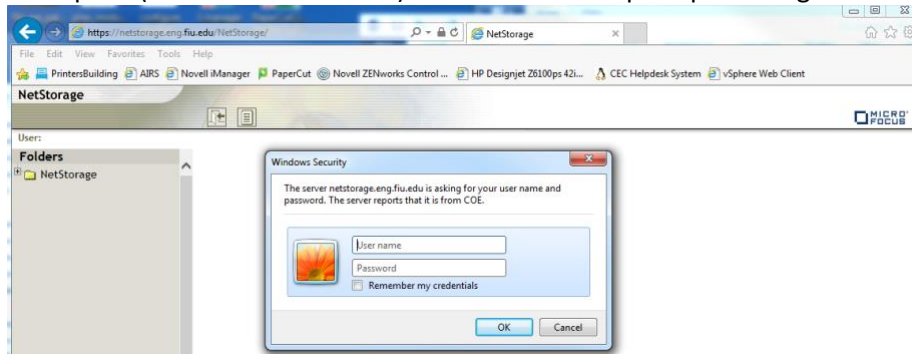


EIC USER MANUAL FOR ACCESSING THE NETWORK DRIVES

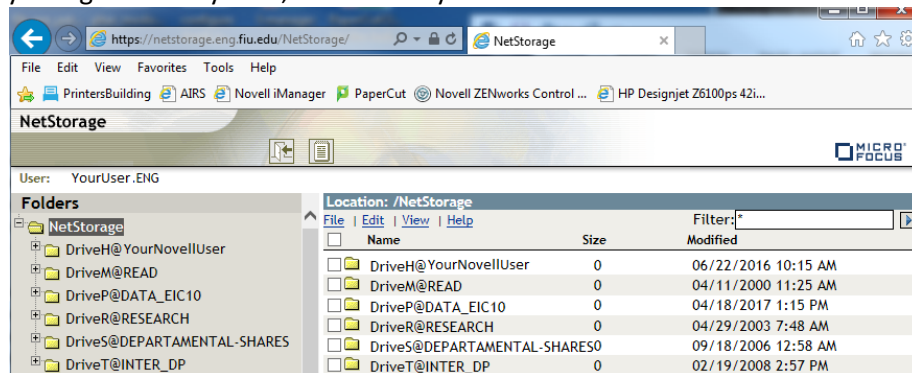
Please follow these instructions to access CEC network drives and manage your data:

- Access the network drives using **NetStorage**:
(First option, to use from anywhere, no VPN needed)

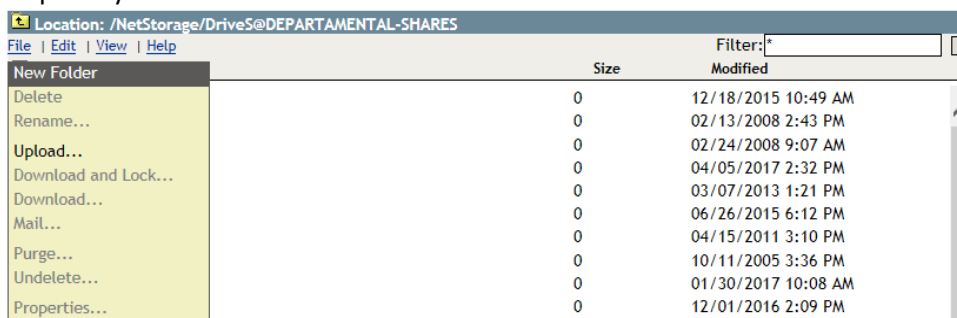
- 1- From an Internet browser go to <https://netstorage.eng.fiu.edu/NetStorage/> and enter your Open Enterprise (also known as Novell) credentials in the prompt message



- 2- Once you login in the system, it will show you all the network drives.

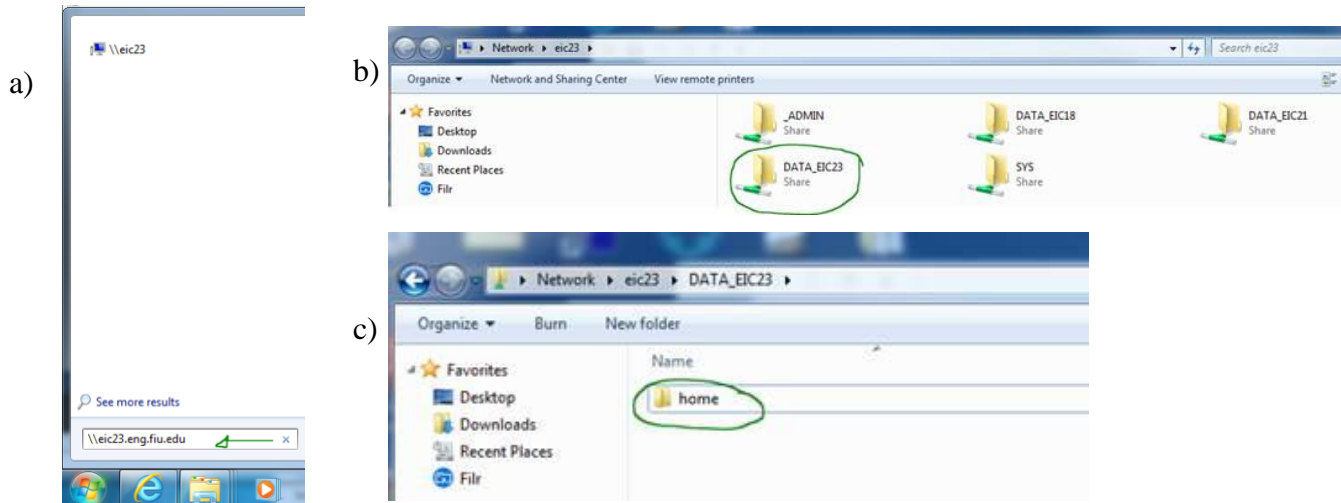


- 3- Then you will be able to navigate within any folder in which you have access granted, you can even upload your data from here.



NOTE: This application lets you do everything you normally do with folders and files (move, delete, rename, etc.) except download and upload folders. You can download and upload files, but not folders.

- Access the network drives [mapping them](#):
([Second option](#), to use [from campus](#) without the Novell client or [from anywhere](#) using VPN)



Shared folders are located in the following network drives:

H-drive: Personal Home Workspace

- : \\eic23.eng.fiu.edu\DATA_EIC23\HOME (students)
- : \\eic6.eng.fiu.edu\DATA_EIC6\HOME (faculty/staff)

M-drive: Course materials

- : \\eic21.eng.fiu.edu\DATA_EIC21\READ

R-drive: Research data

- : \\eic16.eng.fiu.edu\DATA_EIC16\RESEARCH

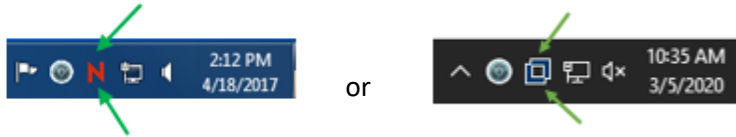
S-drive: Departments shared folders

- : \\eic21.eng.fiu.edu\DATA_EIC21\DEPARTMENTAL-SHARES

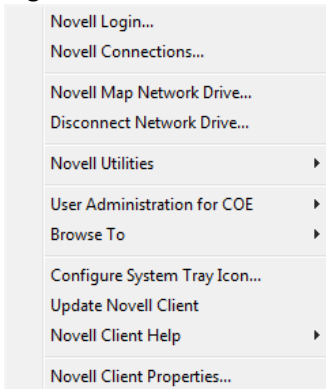
- Access the network drives [using the Novell client](#):

For those who are engineering students, faculty or staff using computers with the [Novell client](#) installed:
 (Third option, to use [from campus](#) with the Novell client or [from anywhere using VPN](#))

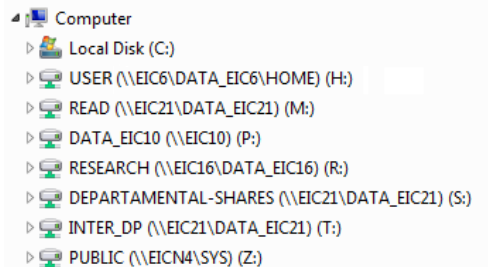
The icon will look like



Right click on the icon and do a Novell login:



Then from your file explorer you will see all the network drives:



- For **MAC** users, access the network drives [using the Kanaka client](#):
 (Fourth option, to use [from campus](#) with the Kanaka client or [from anywhere using VPN](#))

Download installer from: <http://web.eng.fiu.edu/kanaka/>

After installing it, configure your client with the following connection parameters:

Server – eicn1.eng.fiu.edu
 Port – 3089