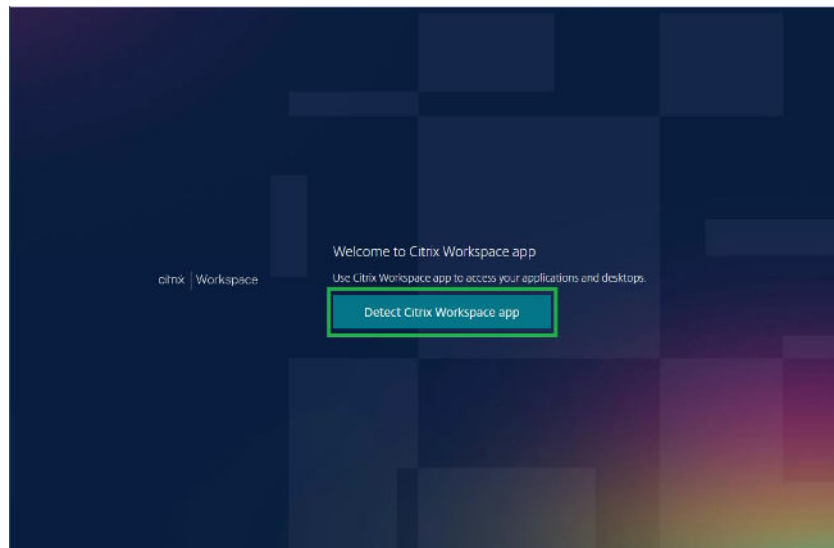


EIC User Manual for Citrix Client installation on Windows

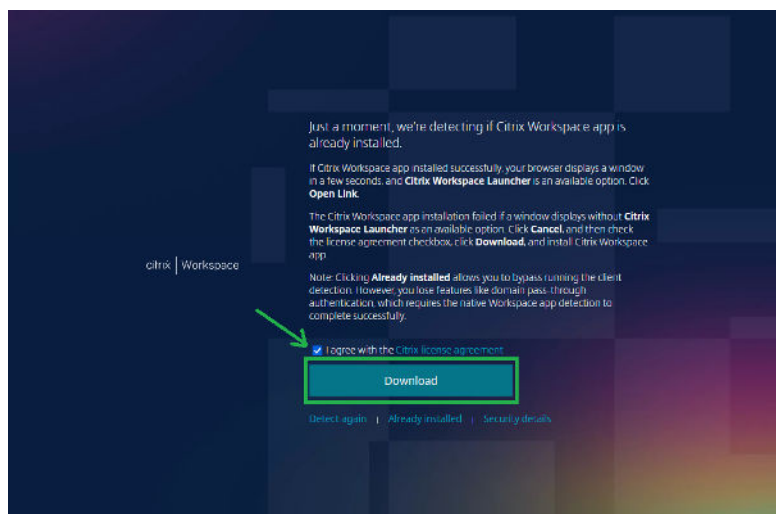
Please read the following instructions. Completion of all steps are required for a successful installation. We recommend following this procedure using as Internet Browsers: Google Chrome or Mozilla Firefox.

PLEASE ENSURE THAT YOU ARE CONNECTED TO FIU'S VPN PRIOR TO BEGINNING THE INSTALLATION.

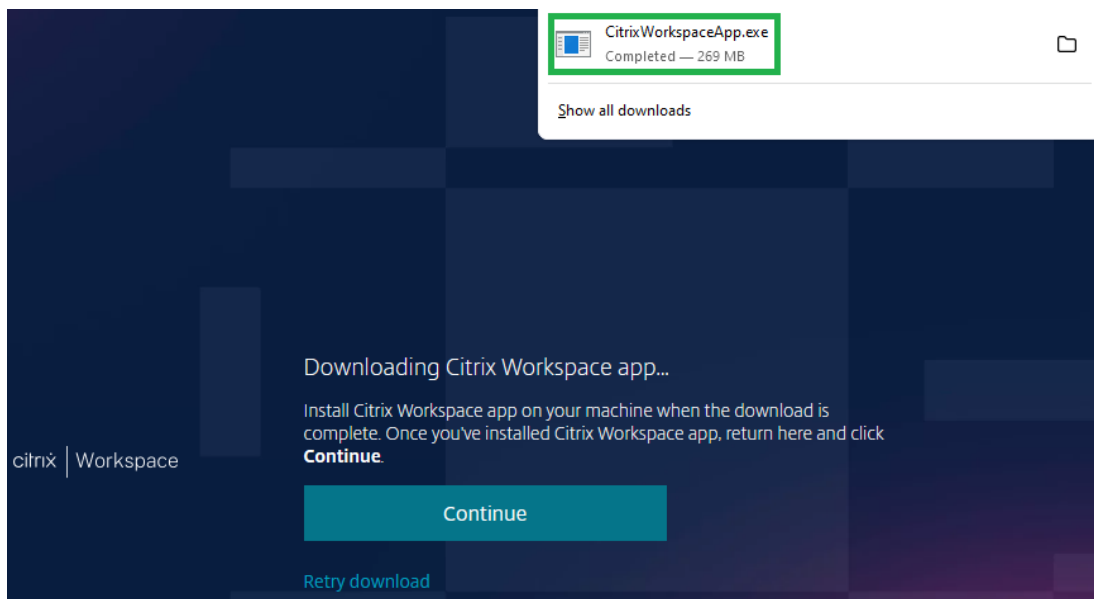
1. Go to <https://eicapps.fiu.edu/>
2. Click on the “Detect Citrix Workspace app” button.



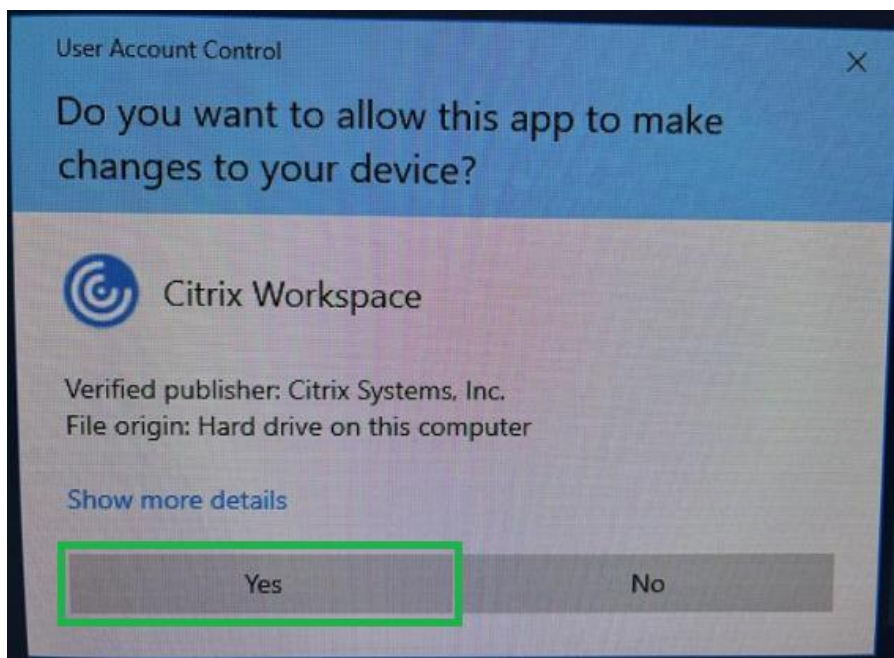
3. Click on checkbox next to the message “I agree with the Citrix license agreement” and then click on the “Download” button.



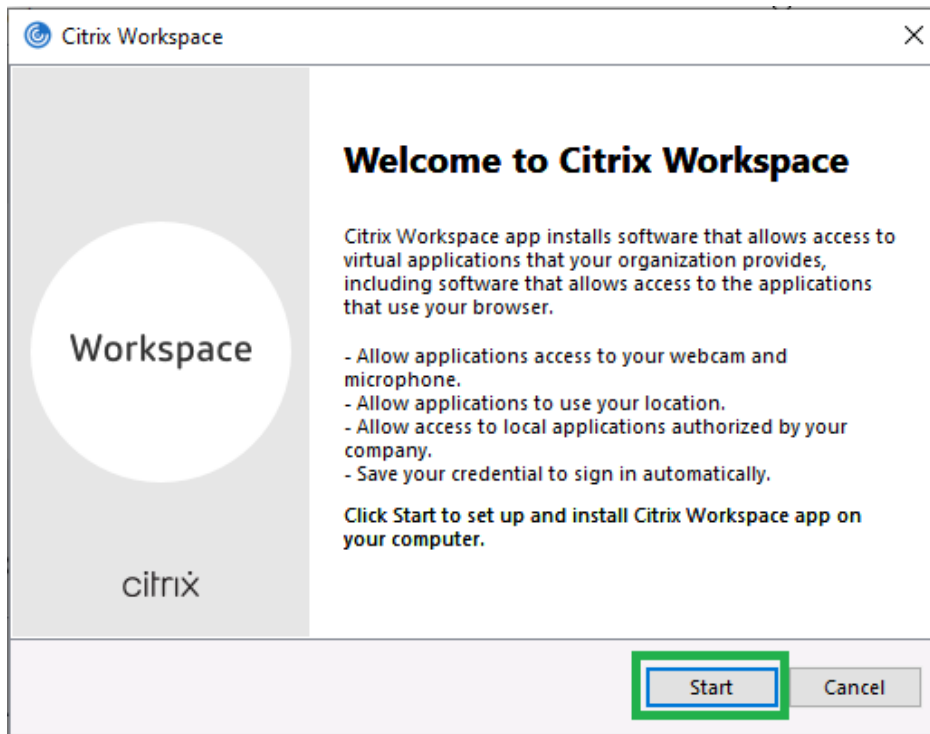
4. Click on the downloaded “CitrixWorkspaceApp.exe” file:



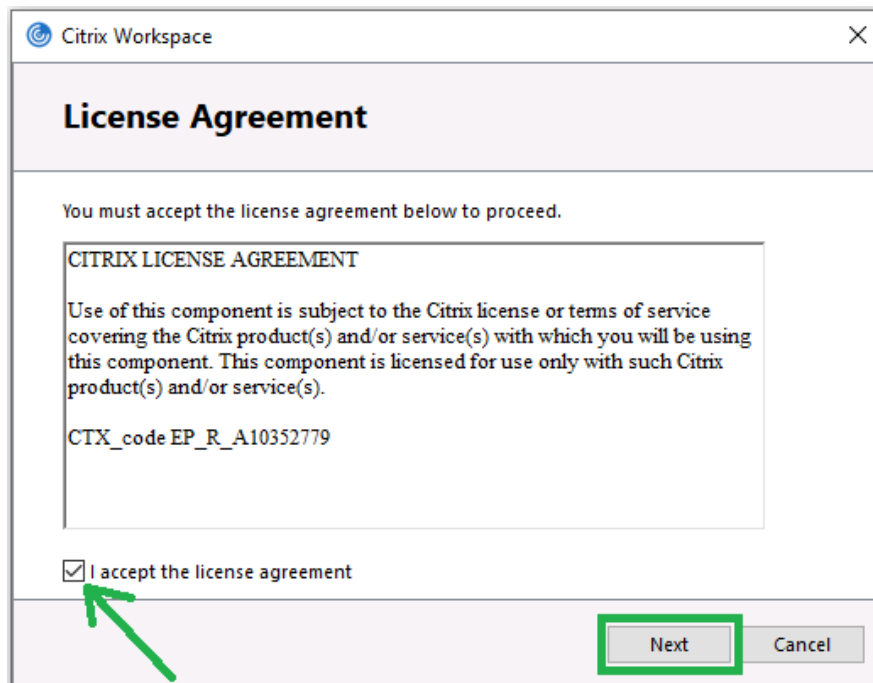
5. Click on the “Yes” button to install the Citrix Workspace app:



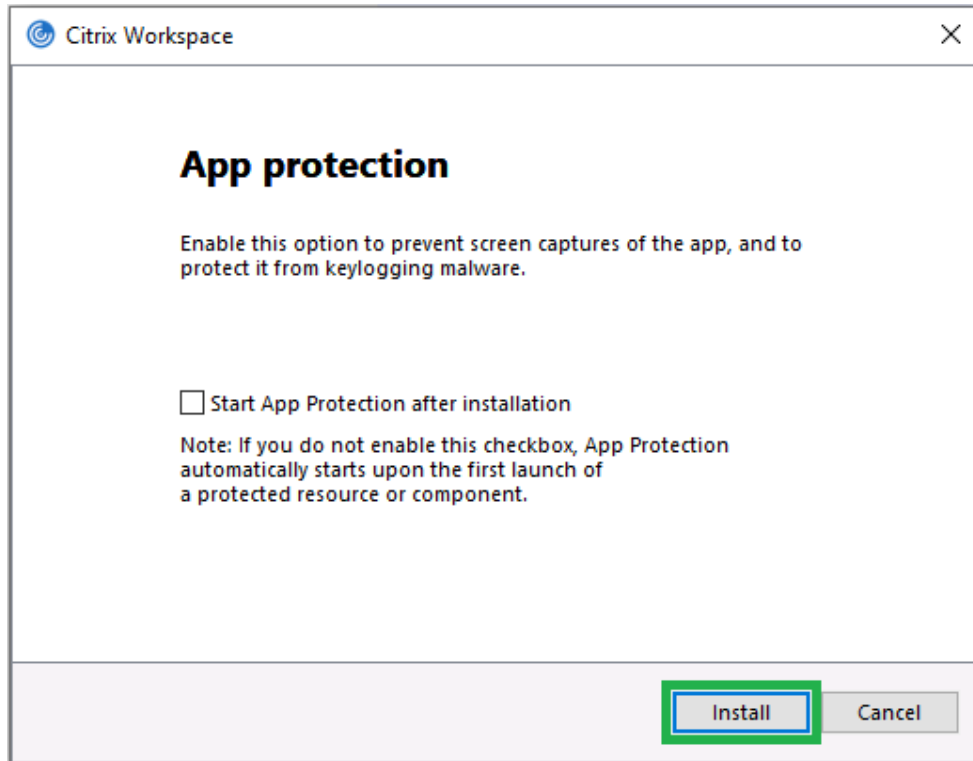
6. Click on the Start button:



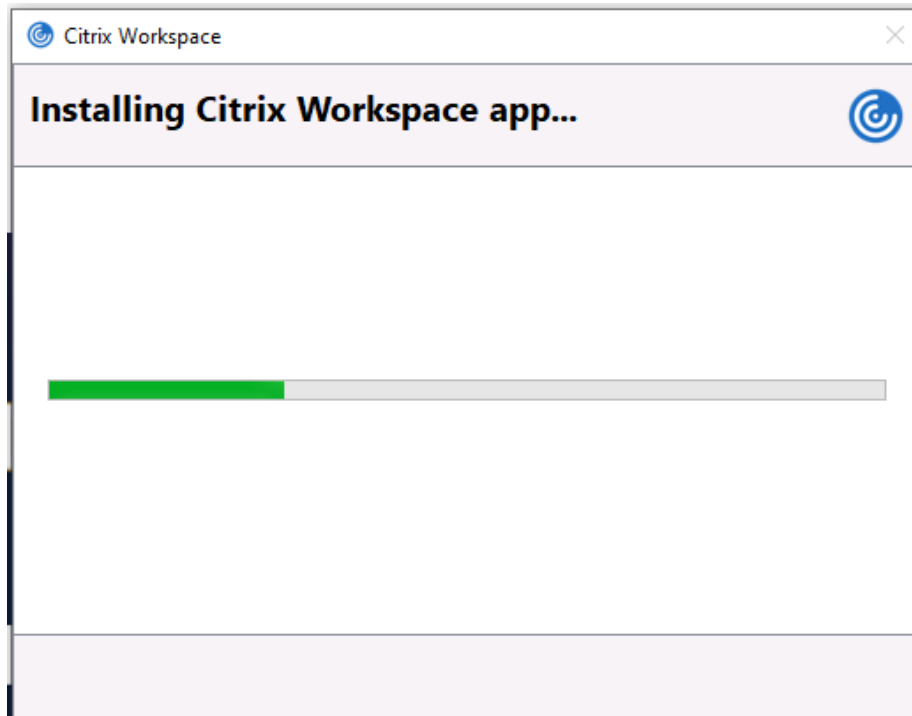
7. Click on the checkbox next to the message "I accept the license agreement" and then click on the "Next" button.



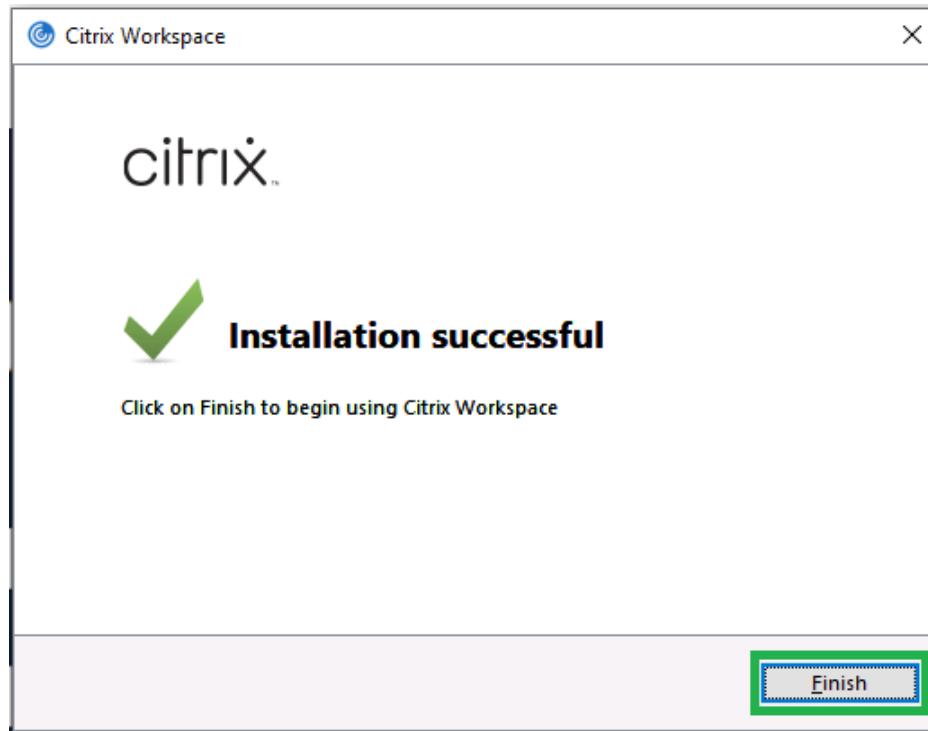
8. Click on the “Install” button:



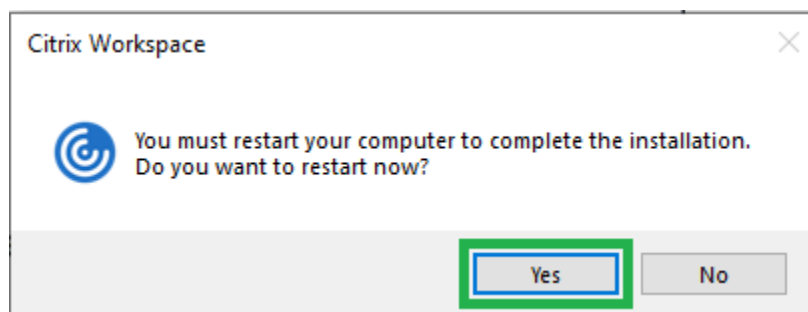
9. Please allow some time for the installation of the Citrix Workspace app to complete:



10. Click on the “Finish” button:

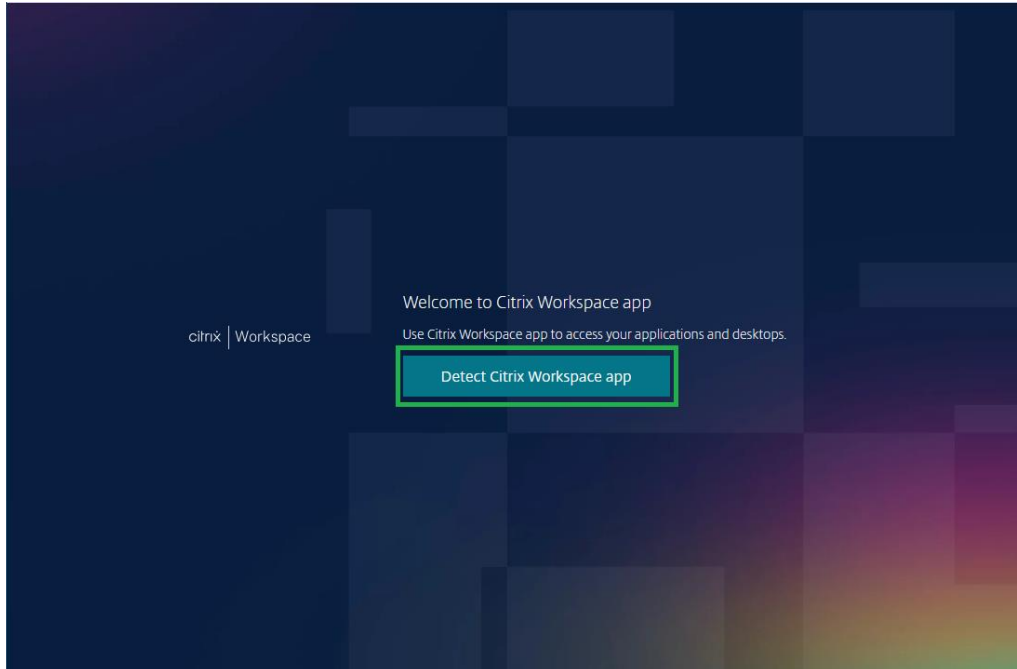


11. Please save and close your work, and then click on the “Yes” button to reboot your computer:

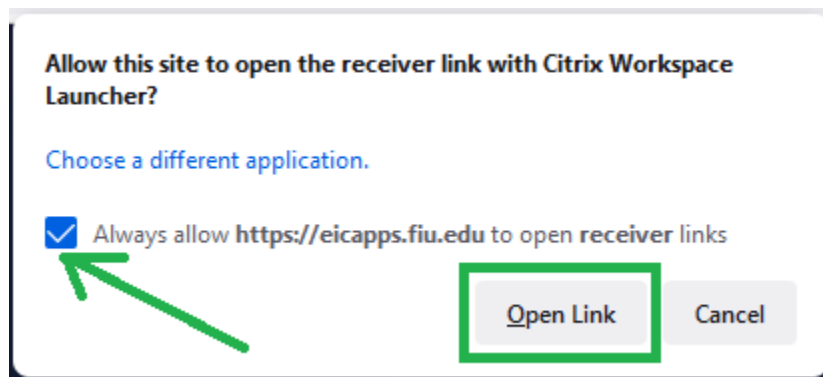


12. Once your computer is rebooted, please go to <https://eicapps.fiu.edu/>

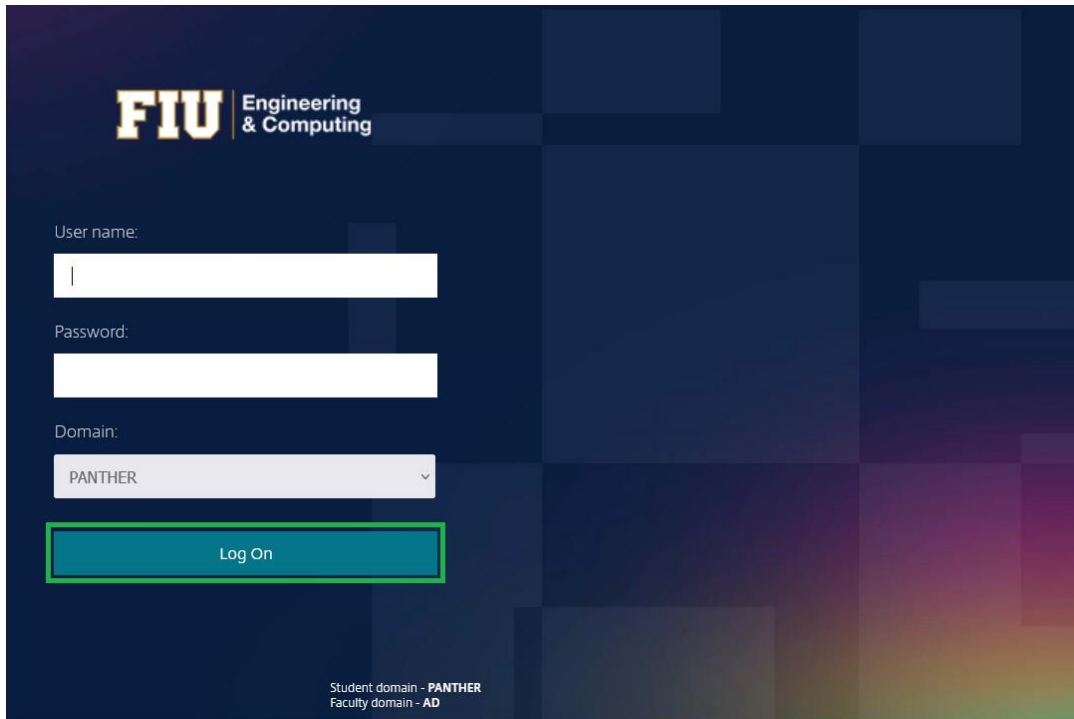
13. Click on the “Detect Citrix Workspace app” button:



14. Click on the checkbox next to the message “Always allow <https://eicapps.fiu.edu> to open receiver links” and then click on the “Open Link” button:



15. Type in your my.fiu.edu login credentials and click on the “Log On” button:
[For the “Domain” field: If you are a student, please select PANTHER as the Domain.
If you are faculty, please select AD]



FIU Engineering & Computing

User name:


Password:

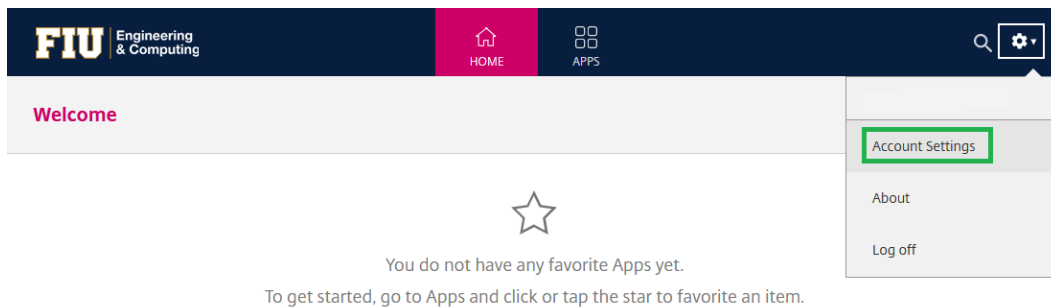
Domain:

PANTHER

Log On

Student domain - PANTHER
Faculty domain - AD

16. Once you are logged into the website, click on the cogwheel on the upper right corner  and then click on “Account Settings”:



FIU Engineering & Computing

HOME APPS

Welcome

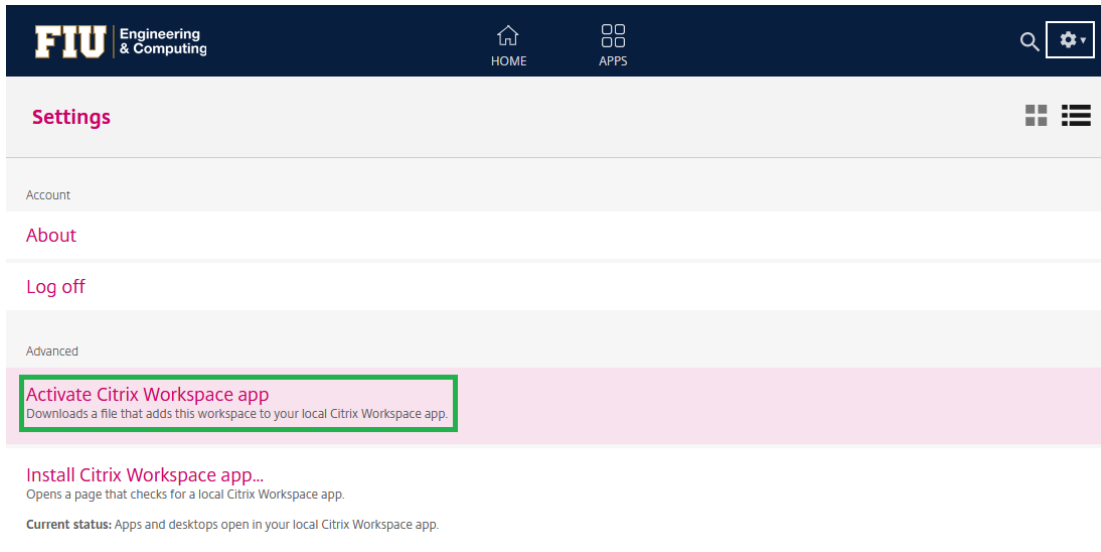
Account Settings

About

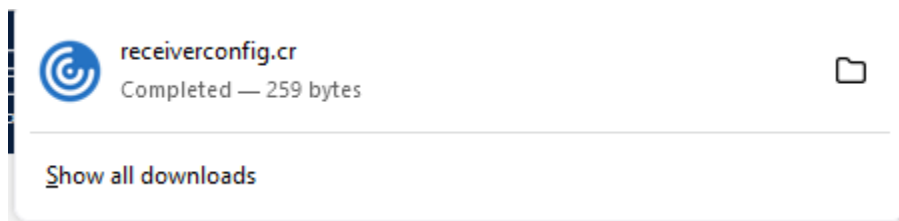
Log off

You do not have any favorite Apps yet.
To get started, go to Apps and click or tap the star to favorite an item.

17. Click on “Activate Citrix Workspace app”:



18. This will be downloaded:



19. Click on “APPS” to view the list of all available apps on Citrix:

